

CENTER FOR TEACHING & LEARNING

Here to assist you with online/remote teaching strategies and pedagogy.

Join us for [Virtual Coffee: Faculty Conversations](#):

Drop-in sessions Wednesdays: 9-10AM & Fridays: 3-4PM

Email ctl@marquette.edu for additional information.

UPCOMING LIVE VIRTUAL TRAININGS TO BETTER PREPARE FOR ONLINE TEACHING

Select training time to join Microsoft Teams Meeting

ENGAGEMENT/ COMMUNICATION

Tuesday, May 12

- [1:00 to 1:45 pm](#)

Wednesday, May 13

- [10:30 to 11:15 am](#)

- [3:00 to 3:45 pm](#)

PROVIDING MEANINGFUL FEEDBACK

Tuesday, May 12

- [3:00 to 3:45 pm](#)

Wednesday, May 13

- [8:30 to 9:15 am](#)

- [1:00 to 1:45 pm](#)

FACILITATING ASYNCHRONOUS CLASSES

Thursday, May 21

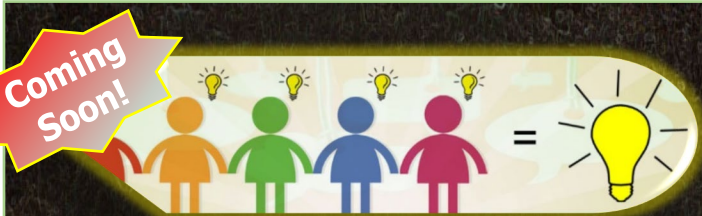
- [3:00 to 3:45 pm](#)

Friday, May 22

- [9:30 to 10:15 am](#)

- [2:00 to 2:45 pm](#)

If you are interested in any of the trainings but are unable to attend due to a timing conflict please contact [Jennifer Maney](#) for assistance.



OUR FAVORITE THINGS: Marquette Faculty's Best Tips and Tools for Teaching Remotely

Short interview series featuring different faculty across campus discussing their favorite tip or tool to use when teaching remotely. MS Teams meeting will be used to interview the faculty member and allow them to share: What is the feature? Why do they love it? How is it helpful in teaching and/or for students? Also provide quick demo of how feature(s) work using screenshare.

Coming Summer & Fall 2020!

Practical Ignatian Pedagogy On-Line Course Learning Community



This digital seminar for faculty connects the Jesuit philosophy of education with contemporary cognitive theory. Learn how to better engage students by creating critical reflection opportunities and rubrics to assess them. Participants will work on their own curriculum, for a face to face or online course. The CTL and Service Learning will virtually host this self-paced seminar, with participants meeting to build community and share their reflections. The course will take 5-8 hours of activity over the period of 4 weeks. Participants will receive feedback on the assignments and rubric they create as well as a certificate of completion. If interested, please email [Jennifer Maney](#).

CONSULTATIONS

- ✦ Submit your questions regarding technology to [ITS Services HelpDesk](#).
- ✦ Submit your questions about **online** teaching to the [Distance Learning HelpDesk](#) portal.
- ✦ For all other general teaching related questions please email [Jennifer Maney](#).

On-line Colleague Companions

From May 18 to June 30, 2020, as we continue remote instruction for summer, the CTL will offer virtual one-on-one consultations with our online colleague companions. This is to support your teaching-related needs, specifically in the realm of the online/remote teaching environment.

Companions will offer mentoring, online open office hours, and one-on-one consultations and support for questions you may have about your online/remote teaching practice.

Consultations can be about any teaching-related questions; however, below are the most common needs of faculty:

- Practical tips for communicating with students
- Effective discussion board forums
- Actively engaged learning assessments
- Tips for optional synchronous sessions
- Rubric design
- Instructor engagement week-by-week
- Concluding reflective assessments for remote learning forums
- Midterm student survey questions to help instructors
- Building clear D2L Modules
- Adapting assessments to a virtual forum
- Video editing / developing effective video lessons



[JOSEPH "DREW" STATHUS](#)

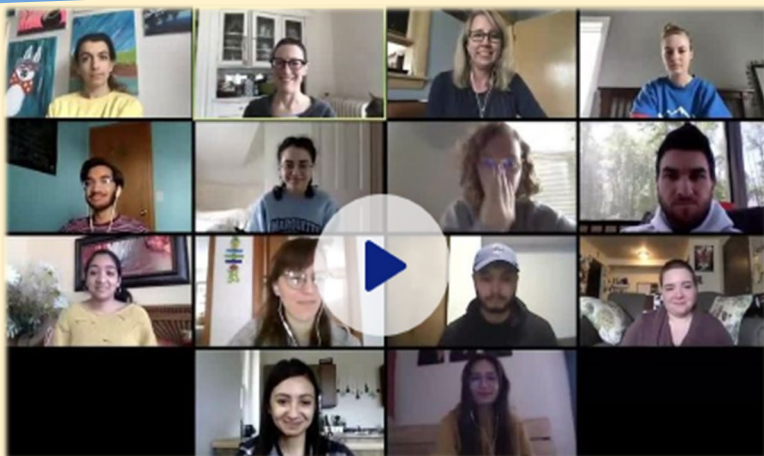
Drew joined the College of Business Administration in the fall of 2010 and is the BUAD in-house academic technology specialist. He works with faculty to improve and develop online learning opportunities for the college, and serves as a consultant to faculty, staff, and students to further the use of technology in teaching and learning.



[DR. MELISSA SHEW](#)

Dr. Shew is a Visiting Assistant Professor in the Philosophy Department and is a Faculty Fellow in the Center for Teaching and Learning. Her focus is on **authentic** educational experiences for students at all levels from PhD students through high school students. She has a lot of experience in face-to-face classrooms as well as in remote learning settings. Regardless of setting, she works to create meaningful educational experiences for all students and educators. Her pedagogical expertise aligns with this general stance, combining feminist, Socratic, Ignatian, and critical pedagogies to support student learning. Dr. Shew is available for a wide variety of consultations for instructors at all levels (graduate students, participating faculty, tenure stream faculty), especially:

- Facilitating in-person or online discussions
- Communicating effectively with students
- Dialogue in all classrooms (in-person and virtually)
- Creating creative and meaningful student experiences remotely
- Reflective exercises
- Transparent grading
- Asynchronous course-building
- Synchronous lecture strategies and tips



OTT WRITING CENTER

Summer '20

This summer, the Ott will be open at least 4 days a week for remote, one-to-one tutoring. Stay tuned for details about additional programming designed for both graduate students and faculty with ongoing research and writing projects.

Questions or requests? Contact Co-Directors [Jenn Fishman](#) and [Rebecca Nowacek](#).



The Service-Learning Program

is currently registering courses for the fall semester. If you are interested in learning more about opportunities for community based experiential learning for the fall, please contact [Kim Jensen Bohat](#), Director, Service Learning, or complete this [form](#).

Association of College and University Educators (ACUE)

ONLINE TEACHING TOOLKIT

ACUE

ADDITIONAL RESOURCES

[How to Be a Better Online Teacher: Advice Guide](#)

(Darby, Flower: Chronicle of Higher Education)

[What Online Teachers Have Learned from Teaching Online](#)

(Lieberman, Mark: Inside Higher Education, April 11, 2018)

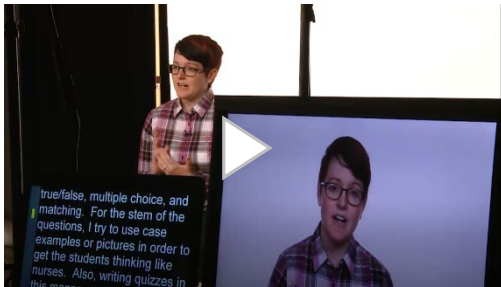
[The Coronavirus Stories Archive](#). A resource for "scholars, teachers, and students to learn more about the impact the pandemic has had on us and on our larger communities." In practice, it may give instructors in any discipline material for helping students relate their own experiences to others' as well as different subjects they study.

Personal, Accessible, Responsive, Strategic: Resources and Strategies for Online Writing Instructors, a smart, accessible, and expert driven book available at no cost online via the [WAC Clearinghouse](#)

Helpful Videos from the Archives

Watch videos

How I take advantage of D2L....



Dr. Amber Young-Brice
College of Nursing



Dr. Brook Mayer
Civil, Construction and Environmental Engineering

D2L Take Advantage

STUDENT PERSPECTIVE



Twinkle Dutta
College of Health Sciences



Hannah Thiry
College of Business Administration



Blake Hartman
College of Business Administration

Explore [video tutorials](#) available for D2L, Creating Audio and Video, and Microsoft Teams on the [Center for Teaching & Learning website](#).

[Dr. Young-Brice](#) no longer teaches this course. However, she is more than happy to discuss alternative quizzing methods with any interested faculty.